

Then, Now and the Future

Overview of Water Network Planning

Cindy Wallis-Lage

Executive Director, Sustainability & Resilience



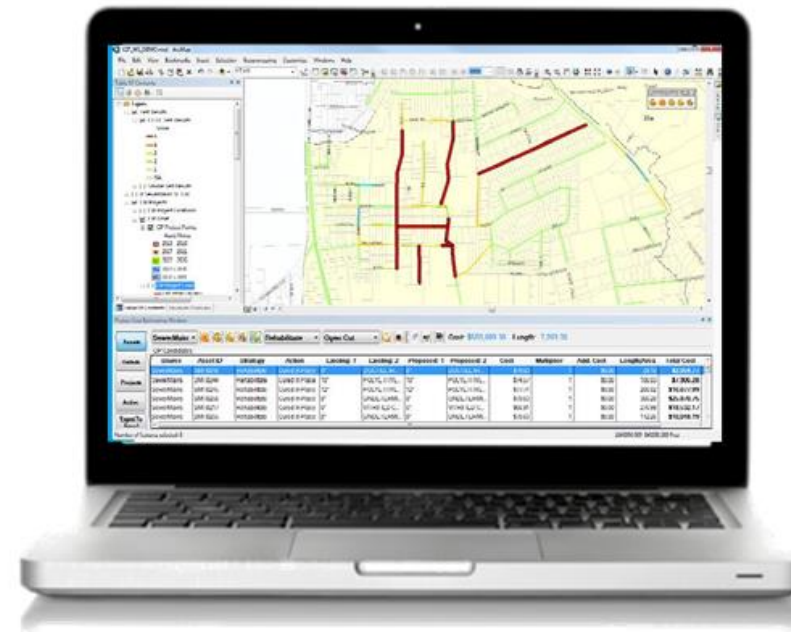


Then: Traditional Network Plans

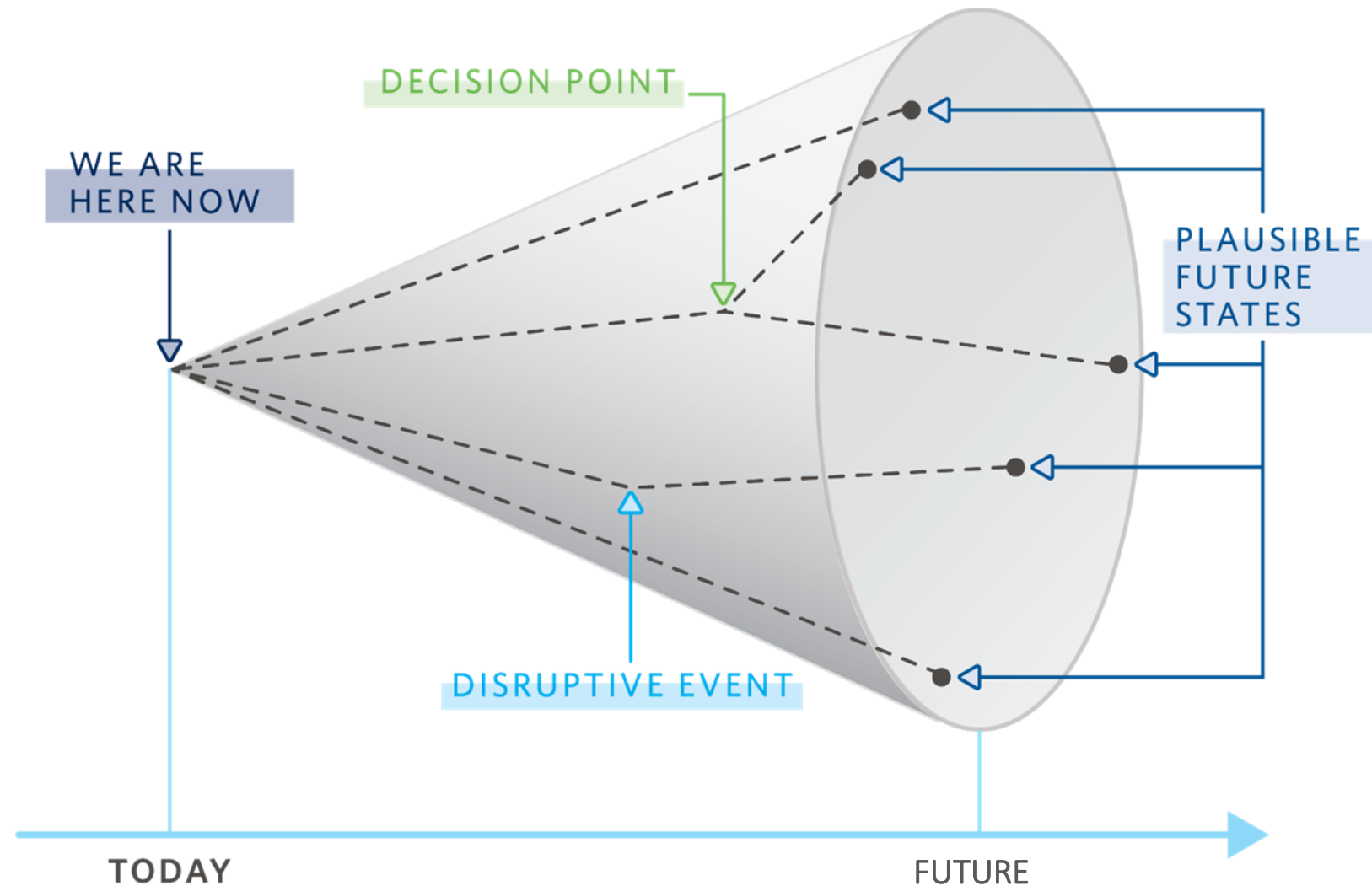
Typically,

- Focused on one system at a time
- Generally capacity driven
- Low adaptability and often quickly out-of-date

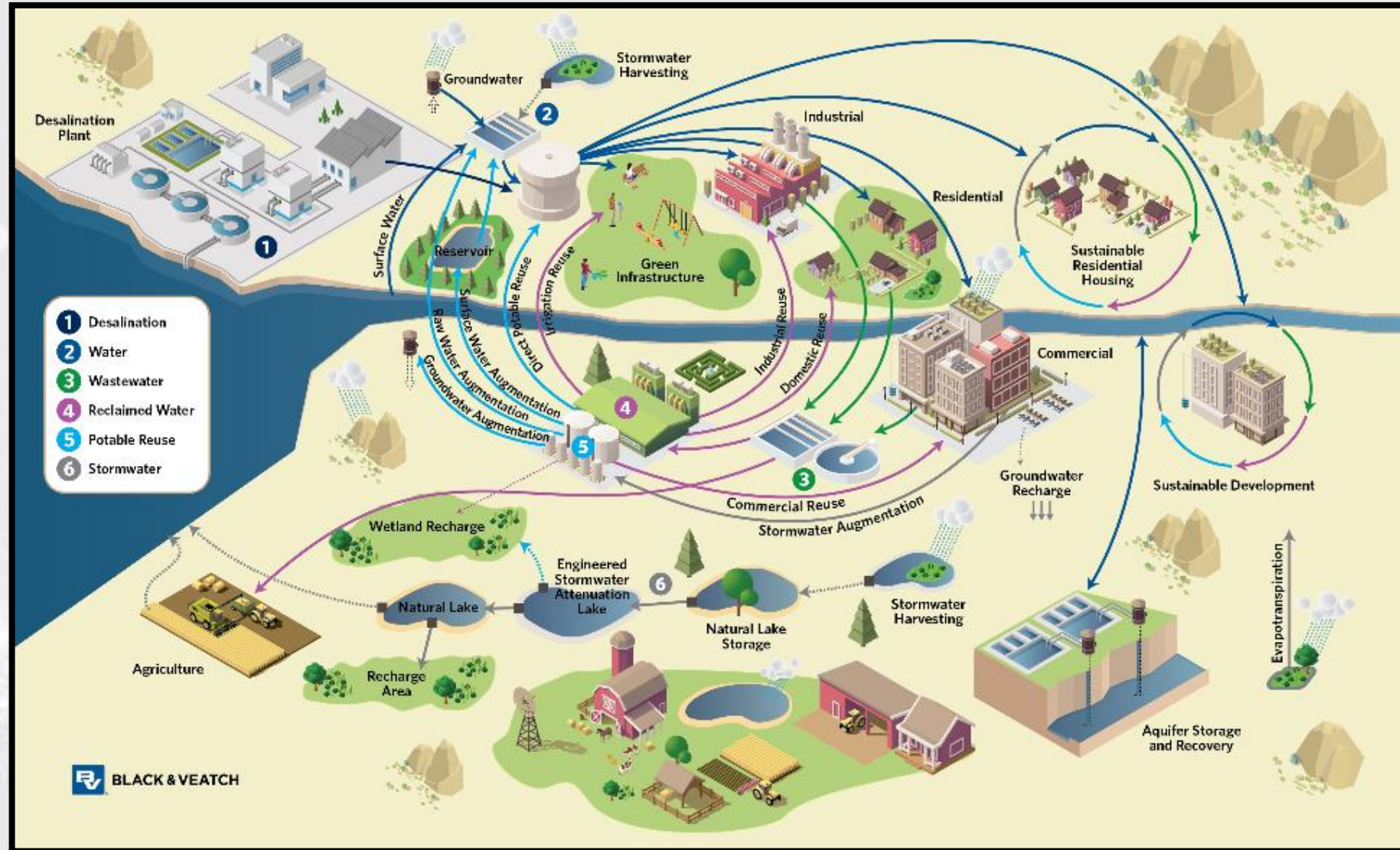
**Now:
Integrated
and Adaptive**

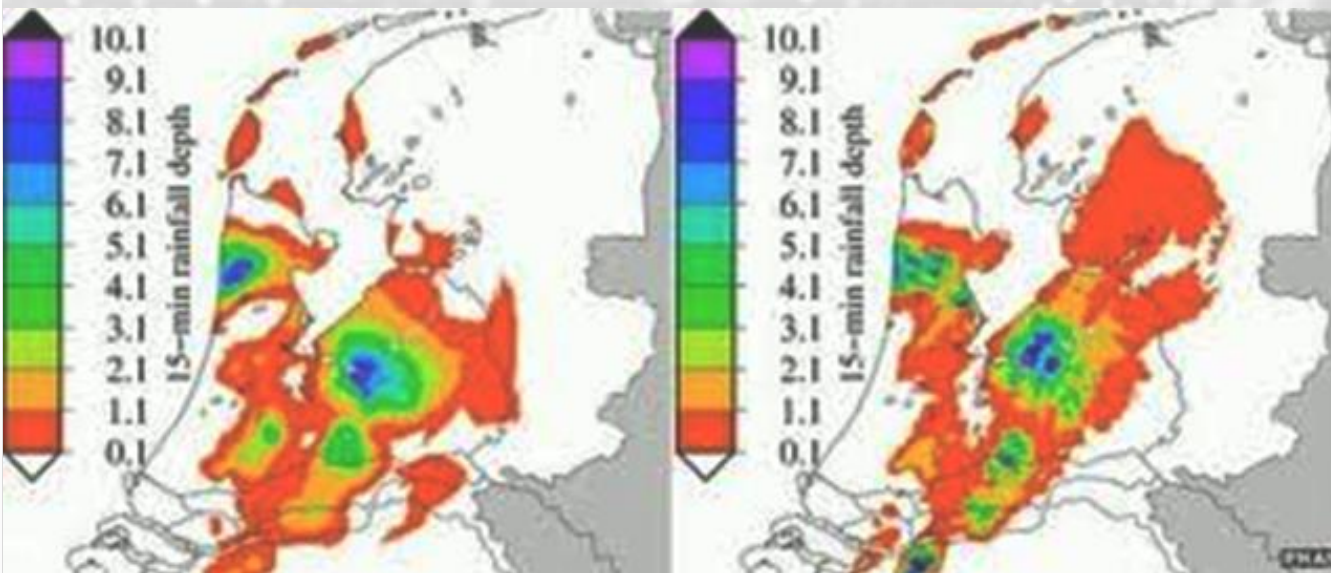


Uncertain Futures Require Broad Thinking



Integrating Complex Systems

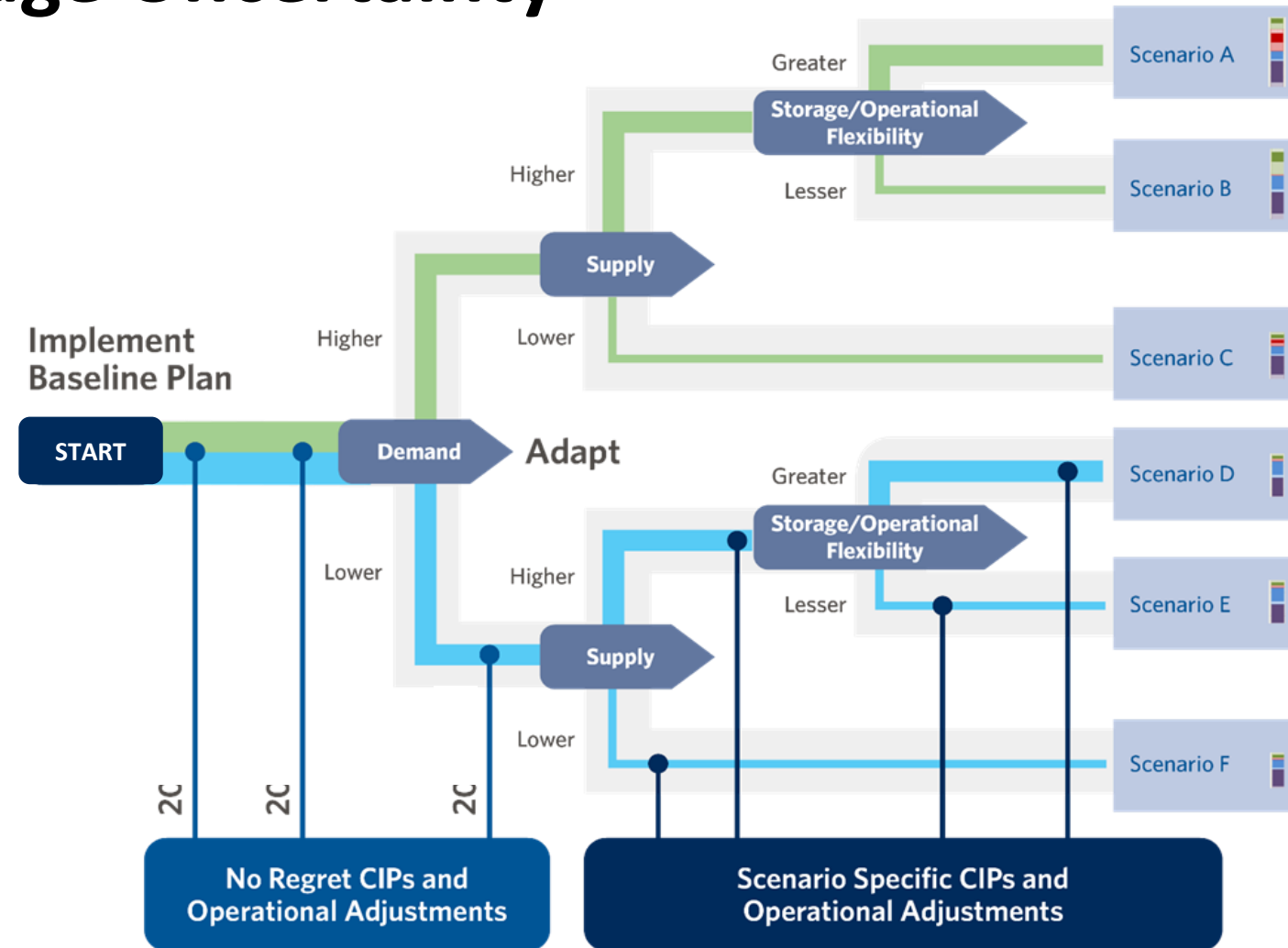




Planning for Resilience

- Change Regulations
- Climate Change
- Conservation
- Drought
- Local Supply Development
- Sustainability
- Urbanization

Adaptive Planning Provides Flexibility to Manage Uncertainty





Improving Communication and Adaptability through Business Intelligence



Static

The diagram features a light gray background with a pattern of small white dots. On the left, the word 'Static' is enclosed in a blue L-shaped frame. To its right, the word 'Adaptive' is in a similar blue frame. Further right, a white rectangular box contains a large black question mark. A blue curved shape is visible in the top right corner of the slide.

Adaptive

?

- Digital, artificial intelligence, machine learning
- Resilience and climate
- ESG/Sustainability

Discussion.